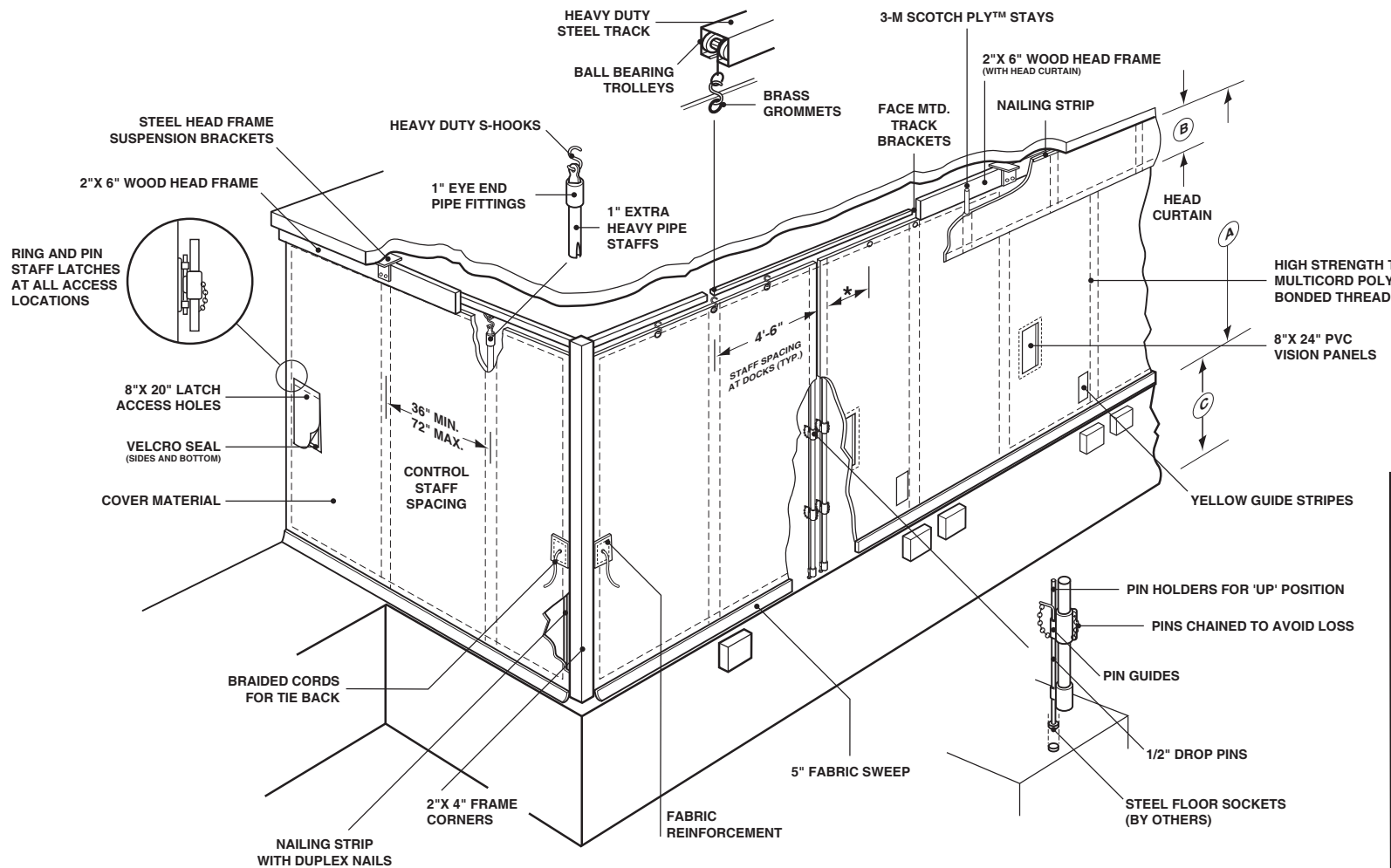


**SERIES 6000**  
SLIDING DOCK CURTAIN



\*STANDARD GROMMET SPACING:  
15" - 24" DEPENDING ON CURTAIN  
MATERIAL AND HEIGHT.

ALL STEEL COMPONENTS ARE  
PAINTED OR PLATED TO ASSURE  
CORROSION RESISTANCE.

**UNIT DATA**

"A" DOCK FLOOR TO TOP  
OF FURNISHED WOOD  
HEAD FRAME

"B" HEAD CURTAIN LENGTH

"C" DOCK HEIGHT

**FABRIC**

- 1001  1006
- 1004  1008

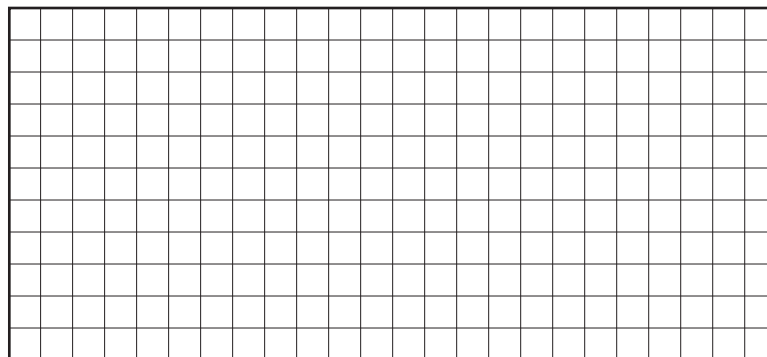
**OPTIONAL EQUIPMENT**

- HEAVY DUTY (1 1/2") CONTROL STAFFS AND (3/4") DROP PINS
- RADIUS CORNER TRACK
- CUSTOM HEAD FRAME SUSPENSION BRACKETS
- ADDITIONAL VISION PANELS

SKETCH PLAN (TOP) VIEW OF SLIDING CURTAIN  
APPLICATION ON GRAPH.

DIMENSION: INCLUDING LOCATIONS OF TRUCK DOCKS,  
PEDESTRIAN ACCESS POINTS AND ADDITIONAL  
OPTIONAL VISION PANELS.

SCALE \_\_\_\_\_



P.O. BOX 151 • 205 BROADVIEW STREET  
UPPER SANDUSKY, OHIO 43351  
800-262-1188 • 419-294-4987 • FAX: 419-294-4980  
VISIT US ATÉ WWW.FAIRBORNUA.COM

JOB:	
LOCATION:	
CONTRACTOR:	ARCHITECT:
APPROVED BY SIGNATURE:	